



## IN THE LOOP!

This newsletter brings you the latest Playhouse news, developments and offerings. A bi-weekly update to help keep you In The Loop until we can welcome you back into the building.

---

### INDUSTRY UPDATE

---

We are moving in the right direction to welcome you back into the Playhouse.

Thanks to almost 35 million people in the UK having received at least one dose of a coronavirus vaccine - part of the biggest inoculation programme the country has ever launched, the ambition of offering vaccines to as many adults as possible by summer continues.

The continued success of the vaccine programme is one of the four conditions needed for further easing of restrictions and with such positive results we are being optimistic and planning to re-open the Playhouse PHASE ONE on May 17<sup>th</sup>.

#### PHASE ONE - May 17<sup>th</sup>

The re-opening of the McKenna's on the ground floor along with the Library.

We have been working with our hospitality partners to make the foyer area as spacious as possible to allow café patrons to wait safely inside as opposed to outside for a table. We have hand sanitising stations and information upon entry. To create space and assist with two way traffic at the front entrance the Playhouse Box Office will not be in operation in the foyer. We ask for the cooperation of all of our patrons to continue using the ONLINE Playhouse Box Office and make telephone enquiries and bookings.

Café tables will be spread out into the White Room on the Ground Floor and although café reservations are recommended it is not essential to pre-book.

Only the Ground Floor is open during Phase One with no access to the upper level of the Playhouse.



PHASE TWO will be the next phase of re-opening of the first floor, Playhouse Auditorium and Gallery. The date for PHASE TWO opening is dependent on results from the Government Events Research Programme. Events are currently being piloted and will explore how different approaches to social distancing, ventilation and test-on-entry protocols could ease opening and maximise participation. The evidence from these pilots will be used to inform and shape government policy to bring about the phased return of fuller audiences to venues and events up and down England.

#### Event's Research Programme

Spectators are attending a series of scientific pilot events as part of the government's plan to safely get big crowds back this summer, starting with the World Snooker Championship at the Crucible in Sheffield on 17 April.

Working closely with local authorities and organisers, the science-led Events Research Programme (ERP) pilots will be run across a range of settings, venues, and activities. The programme's findings will support the full reopening of similar settings across multiple sectors in the summer.

All pilots are designed in a scientifically controlled way, with special consideration to reduce risk of transmission. The events are exempt from the wider coronavirus regulations, including the rule of six.

The programme is overseen by an industry-led steering group co-chaired by Nicholas Hytner and David Ross, working closely with national and local public health authorities. The board will consider the evidence, including test results, from the pilot events and make recommendations to the Prime Minister and the Secretaries of State for DCMS, BEIS and DHSC on how restrictions could be safely lifted.

The initial list of events includes:

- 18 April - FA Cup Semi-Final - Wembley - 4,000 people (outdoor seated)
- 17 April - 3 May - Snooker World Championships - Sheffield Crucible Theatre - up to 1,000 people a day (indoor seated)
- 25 April - Carabao Cup Final, Wembley - 8,000 people (outdoor, seated)
- 28 April - Business Event, Liverpool - 1,000 people (indoor, seated and mixing)
- 30 April - Circus Nightclub, Liverpool - circa 3,000 people (indoor club night)
- 2 May - Festival Republic gig, Liverpool (outdoor)
- 11 May - The BRIT Awards, London - 4,000 people (indoor, seated)
- 14 - 16 May - Luna Outdoor Cinema, Liverpool - 1,000 people (outdoor seated)
- 15 May - FA Cup Final, Wembley, London - 21,000 people (outdoor, seated)

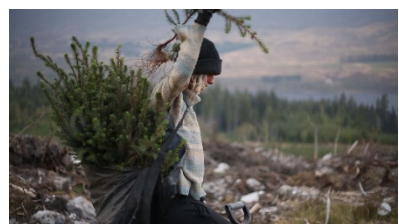
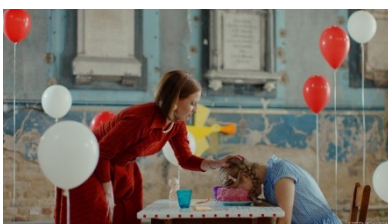
---

## PLAYHOUSE AT HOME

---

This month **PLAYHOUSE AT HOME** brings a brand new selection of fantastic films online for you to rent.

This month's selection features **WOMEN OVER 50 FILM FESTIVAL (WOFFF)**, showcasing international films by and about older women. Now in its 7th year, WOFFF creates a film community centred around older women and inspires younger people to re-think ageing and see creative potential in an often-invisible demographic. This virtual Best of the Fest is packed with award-winning films of witches, warriors and women who roar!



Every time you watch a film from the comfort of your own home the rental fee goes direct to supporting the Playhouse and the independent film makers. Please note when booking you will be redirected to purchase tickets.

This month's selection, **available until Thursday 20th May**, is:

- Stray
- Minari
- Groundswell
- Women over fifty film festival
- Rose
- Mouthpiece
- Song without a name

We hope you enjoy our selection!

[Find out more and book your tickets here.](#)

---

## PLAYHOUSE GALLERY ONLINE

---

Judith Appleby

### Inspired by the Coast

4th May - 7th June 2021

A new collection of paintings for exhibition this Summer by artist Judith Appleby featuring the beautiful beaches of Northumberland and the dramatic rock formations where the Great Whin Sill meets the North Sea Coast.

These paintings range from abstracted images of geology and the Farne Islands to calm sunny 'secret' bays, and to turbulent North Sea waves and surf.

From a background in architectural education and research, Judy's work is always carefully designed to follow deliberate geometric composition without losing vitality and character of place. Her use of colour in the Farne Islands paintings is drawn from microscopic images of local geology.



Featured Image:

'Inner Farne Lighthouse'

Acrylic on canvas board

Framed: 42 x 42 cm £450

Unframed: 30 x 30 cm £400

The Playhouse Gallery is committed to supporting artists throughout the region and we continue to offer our support, safely, in whatever way we can during these difficult times. While the doors are currently shut, the Playhouse Gallery is still running **ONLINE**.

[Click here to browse the Playhouse Gallery.](#)



---

## LIBRARY SERVICES

---

We are pleased to tell you Alnwick Library in the Playhouse will be open for time limited browsing and prebooked PC access from 17th May. Procedures are in place to ensure your safety so please remember your mask and be prepared to wait if the maximum number of visitors has been reached when you arrive. Alnwick Library are looking forward to welcoming you back!

To find out more head to the library website [here](#).



---

## THIS WEEK'S WATCHLIST

---

After the popularity of our earlier watchlists from our film programmer Jonny Tull, here is another selection of great films currently streaming online on Netflix, Amazon Prime, All4 and BBC iPlayer for you to explore over the next two weeks.

This weeks watchlist features Palm Shirley. Elizabeth Moss takes on the role of horror writer Shirley Jackson in this tantalisingly unconventional spin on the biopic and the creative process. The



film takes its lead from Susan Scarf's book Shirley: A Novel, in which the writer creates a fictitious event in Jackson's life. Here, she is struggling to write her new novel, blocked by her own anxieties and agoraphobia. She's living with her cheating and critical husband Stanley Hyman, yet emotionally alone. To give Shirley more time to focus Stanley invites newlywed couple Fred (Logan Lerman) and his pregnant wife Rose (Odessa Young) to stay and run the house whilst his wife works. The two women soon find themselves spending their days together, and as they develop an increasingly unhealthy bond Rose falls under the thrall of Shirley, and the boundaries of reality and fiction begin to collapse...

[Click here to view this weeks Watchlist.](#)

---

## THANK YOU

---

Our thanks to everyone for their continued messages of support. Your continued support for the Playhouse during this crisis is greatly appreciated.

Thank you for reading In The Loop.



Alnwick Playhouse  
Bondgate Without  
Alnwick  
Northumberland  
NE66 1PQ  
Tel: 01665 660550

Not following us  
yet?



[www.alnwickplayhouse.co.uk](http://www.alnwickplayhouse.co.uk)



Supported using public funding by  
**ARTS COUNCIL  
ENGLAND**



**BE FAN**



**Northumberland**  
County Council



**We are #HereForCulture**



[Unsubscribe](#)

Alnwick District Playhouse Trust Limited  
registered in England and Wales Number  
2567793

[Privacy Policy](#)

Charity Number: 1020404